



Canadian Air Mail Rates

Domestic and International 1925-2020

Canadian Air Mail Rates Domestic and International

1st Edition December 16, 2013

2nd Edition July 21, 2017

3rd Edition December 15, 2019)

David E. Crotty, Ph.D.

With considerable assistance from:

Andrew Chung, Chris Hargreaves, Neil Hunter, Dr. Robert C. Smith,
Michael Street , and David H. Whiteley.



First flight of *Caribou* from Montreal to Southampton.

4rd Edition, January 30, 2020

Additions:

1.00-Corrections pages 16 Table 6, page 29 header.

1.01-Comments on Brazil not being in Table 5. March 3, 2014

2.00-Correct Table 2 and Table 3. Add postage rates through 2017

3.00-Update postage rates through 2019 Tables 2, 3, 7, 14 and, 15.

3.01 Corrections

4.00-Add January 2020 rates

David E. Crotty, Ph.D.

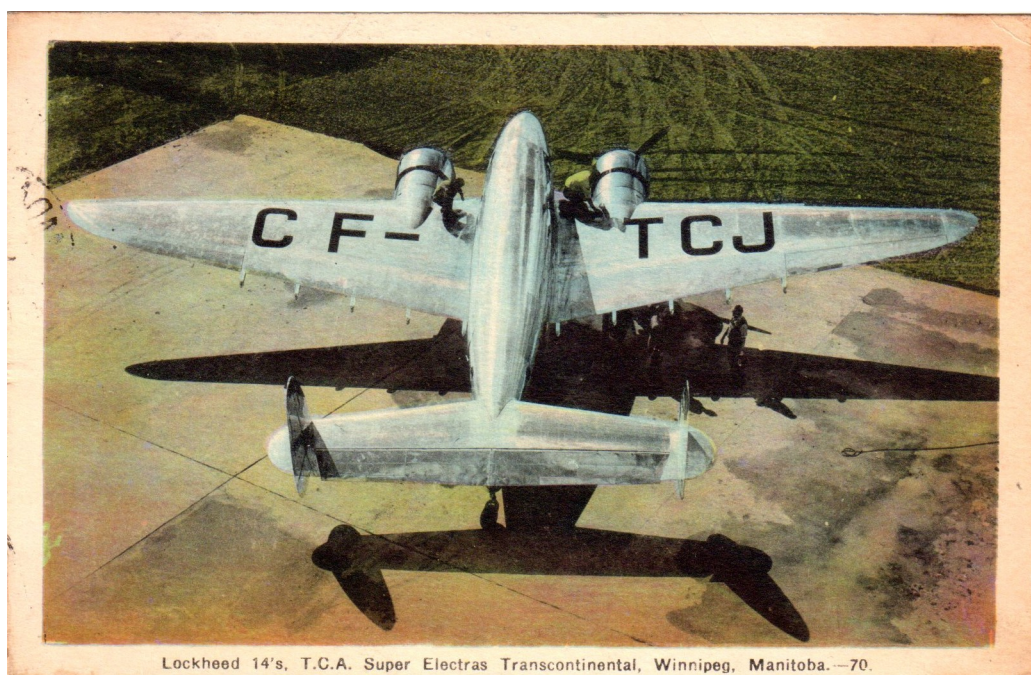
PO Box 16115

Ludlow, KY 41016-0115

This booklet is intended to be used freely by collectors. When cited please mention the sponsors, the Canadian Aerophilatelic Society and the American Air Mail Society. This book is expected to change as information is collected. We hope that it will prompt the reporting of the information that we have missed. Please note the publication date and edition in correspondence.

<http://groups.yahoo.com/neo/groups/aerophilately/info> .

| Table of Contents | Page |
|--|-------------|
| Introduction | 5 |
| I. Air mail Rates to USA and Canadian Cities using USA Air Mail Services 1926-1928 Air Mail services provided between Canadian cities flown through US | 6 |
| II. Domestic Surface and Air Mail Letter Rates: 1928-2020 Domestic Surface Rates 1925-1954 Domestic Air Mail Letter 1925-1928 via US Domestic Air Mail Letter 1928-1954 All Up Letter 1948-forward | 7 |
| III. Surface and Air Mail Letter Rates to the USA 1925-2020 Surface Mail to USA 1928-1976 Air Mail to USA 1928-1976 Airmail to USA First Class Letters to US by air when expedient 1976-forward | 12 |
| IV. International Air Mail Letter Rate Table March 1 1930 Preliminary tables used 1930 and 1931 | 14 |
| V. International Air Mail Letter Rates (except USA): 1931-1939 International Air Mail: surface over sea, air over land where available | 20 |
| VI. International Air Mail Letter Rates (except USA) War Years: 1940-1944 Air mail letters Non-USA route adjustments due to WW II | 24 |
| VII. International Air Mail Letter Rates (except USA): 1944-forward Simplified Air Mail Letter Rates following WW II | 30 |
| VIII. Registry Fees: Domestic, To the USA and International | 34 |
| IX. Special Delivery and Xpresspost Services | 38 |
| References | 41 |



Lockheed 14's, T.C.A. Super Electras Transcontinental, Winnipeg, Manitoba.—70.

Lockheed Electra 14 at Winnipeg, Manitoba
Source: PHOTOGELATINE ENGRAVING CO. LIMITED OTTAWA

Acknowledgements

In addition to the references cited, the author gratefully acknowledges the invaluable assistance provided by Andrew Chung, Chris Hargreaves, Neil Hunter, Dr. Robert C. Smith, Michael Street and, David H. Whiteley. Thanks to the Canadian Aerophilatelic Society for making the *Postal Rates and Fees of the Elizabethan Era in Canada* available to the author.

Introduction

The rate chapter in the 6th edition AAMS catalog for the *Air Mails of Canada and Newfoundland* (AMCN) was excellently provided, in 1995, by Trelle A. Morrow based on the work of Major E. R. Toop. It is our good fortune that at least five major rate studies have been published in book form since that time. These, plus a number of focused articles from the philatelic press make light the task of preparing a rather complete update of what we know about Canadian letter air mail postage rates. The importance of these many works cannot be overstated. These authors also showed a great willingness to help this writer when he became a bit confused by the complexities.

From the References list, we have constructed a number of tables that specify the letter air mail postage rates for the first and second weight categories in most cases. The tables also show surface letter rates for comparison. An outline of the history of the times is included in the introduction of each section to help explain the rates. Details of this history can usually be found in the references cited.

Note: Some issues of the *Monthly Supplement to Postal Guide* of the Canadian Post Office are now available at the website: www.collectionscanada.gc.ca/ - Those from 1913 to 1932 can be accessed at:

<http://www.collectionscanada.gc.ca/databases/postal-publications/001033-100.01-e.php>



Short S23 *Clare* at LaGuardia.....Source: Life Magazine

I. Air Mail Rates to USA and to Canadian Cities using USA Air Mail Services 1925-1928

Early air mail in Canada was carried by a number of semi-official carriers with a surface rate in Canadian stamps plus the carrier's air mail stamp (see Chapter 3 of the AMCN). In July 1925, USA Government air mail services became available and in January 1926 (9) USA contract air mail services for some CAM routes began. Canada could send letter mail by surface means to the United States to be carried by the US air mail services. It was also possible to send letter mail to Canadian cities via the United States. The rate for Canadians was 3¢ surface (including 1¢ war tax) to the nearest US air mail station plus US air mail postage using US stamps. The surface rate was reduced to 2¢ on July 1, 1926, with elimination of the war tax. Enterprising postmasters (2) obtained the US stamps individually until Ottawa ordered that they be obtained only through Ottawa.

In July 1928, Canada and the U.S.A. reached a reciprocal air mail agreement. They agreed:

- To use the same air mail rate of 5¢ first ounce / 10¢ each additional ounce, which the U.S. was introducing on August 1st 1928.
- That this rate would cover all air mail services in either country.
- And that country's air mail stamps would be accepted by the other country (23).

Although the 5¢ rate came into effect in the U.S. on August 1, 1928, for unknown reasons it was not publicized in Canada. According to Arfken and Plomish, in their *book Air Mails of Canada, 1925-1939*: "the Canadian Post Office did not issue any bulletins nor did they immediately advise the agreement to Postmasters and certainly not to the public." [2, Page 40]

The earliest report of this new rate that has been found is a story on the front page of the Monday August 6th edition of *The Globe*, announcing "Air Mail Cheaper" because of the 5¢ rate for air mail transmitted over the United States air mail route. (23).

The 5¢ rate did not yet apply to mail flown on Post Office services within Canada. That continued to be flown without an additional charge for air mail.

A variety of international air mail services became available in 1929 through the USA, Great Britain and France. These rates are shown in Section IV, Tables 4 and 5.

Table 1.
Air Mail to the USA and to Canadian cities using the US air mail services.
Surface rate paid with Canadian stamps. Air rate paid in US stamps.

| Time Period | US Zones | US Zone Rates + surface |
|-------------------------------|------------------------|--------------------------------|
| July. 1925- Feb. 15, 1926 | New York-Chicago | 8¢ US Stamps |
| Surface 3¢ until July 1, 1926 | Chicago-Cheyenne | 8¢ |
| Surface 2¢ until 1931 | Cheyenne-San Francisco | 8¢ |
| Feb 15-1926-Jan 31, 1927 | Up to 1000 miles | 10¢ US Stamps |
| | 1000 to 1500 miles | 15¢ |
| | 1500 to 2000 miles | 20¢ (no zone was > 1500 miles) |
| Jan 31, 1927-Aug 1, 1928 | Each ½ oz. | 10¢ US Stamps |
| Aug 1, 1928 | First oz. | 5¢ Canadian Stamps |
| | Each Addn'l oz. | 10¢ Canadian Stamps |

II. Domestic Surface and Air Mail Letters 1928-2019

The US agreed to accept Canadian stamps for mail using the US air mail system on August 1, 1928 and the rates were reduced. The first Canadian 5¢ air mail stamp was issued September 21, 1928 for domestic and US letter air mail for the first oz. and each extra oz. or fraction was charged 10¢. Thus the same air mail basic and extra weight rates were used for both Domestic and to the US letter air mail, with a few exceptions, until 1963.

War tax (8) of 1¢ had been applied to each letter and postcard since April 15, 1915 and this also was applied to air mail within Canada and to the USA. The tax originally was paid with special tax stamps but by the time air mail started postage stamps were used. On July 1, 1926 this tax was dropped. On July 1, 1931 the 1¢ war tax was reinstated but as a hidden part of the basic postal rate. On April 1, 1943 the war tax was raised to 2¢ as hidden part of the basic postal rate. On July 1, 1948 the war tax was eliminated but the basic postage remained unchanged. Tables 2 and 3 show the tax included as it applied to surface, domestic air mail and air mail to the USA.

On July 1, 1948 an All-Up rate was introduced for letters up to 1 oz. to be carried, space available, by air if expedient. Heavier letters were posted at the surface rate or the continued air mail rate. On November 1, 1968 this was extended up to 8 oz. letters and the separate surface and air mail rates were eliminated. First Class letters from that date on would be carried by surface or, space available, by air if expedient.

Table 2
Domestic Letter Surface and Air Mail Rates: 1928-2020 (1, 3, 6, 15, 23). Rates: ¢.

| Date | Surface 1 st oz. | Surface Each oz. | Air Mail Letter 1 st oz. | Air Mail Letter Each oz. | All-Up Letter ⁶ 1 st wt. | All-Up Letter ⁶ 2 nd wt. | Notes |
|-----------------------|--------------------------------|---------------------|---|-----------------------------------|--|--|-------|
| July 1925 | 3 | 2 | 3+ US post | | | | 1, 3 |
| July 1926 | 2 | 2 | 2+US post | | | | 2 |
| August 24 29, 1928 | | | | | | | 16 |
| October 1, 1928 | 2 | 2 | 5 | 10 | | | 2, 2* |
| July 1, 1931 | 3 | 2 | 6 | 10 | | | 3 |
| October 23, 1931 | 3 | 2 | 6 | 5 | | | |
| April 1, 1943 | 4 | 2 | 7 | 5 | | | 4 |
| July 1, 1948 | 4 | 2 | 7 | 5 | 4 | | 4, 5 |
| April 2, 1951 | 4 | 2 | 7 | 5 | 4 | | 6 |
| April 1, 1954 | 5 | 3 | 7 | 5 | 5 | | |
| November 1, 1968 | Ends | Ends | Ends | Ends | 6 | 4 | 7 |
| July 1, 1971 | | | | | 7 | 12 | 8 |
| January 1, 1972 | | | | | 8 | 14 | |
| September 1, 1976 | | | | | 10 | 18 | |
| March 1, 1977 | | | | | 12 | 20 | |
| April 1, 1978 | | | | | 14 | 22 | |
| April 1, 1979 | | | | | 17 | 27 | |
| July 1, 1979 | | | | | 17 | 26 | 9 |
| January 1, 1982 | | | | | 30 | 45 | |
| January 15, 1983 | | | | | 30 | 48 | |
| February 15, 1983 | | | | | 32 | 48 | |
| January 24, 1985 | | | | | 34 | 51 | |

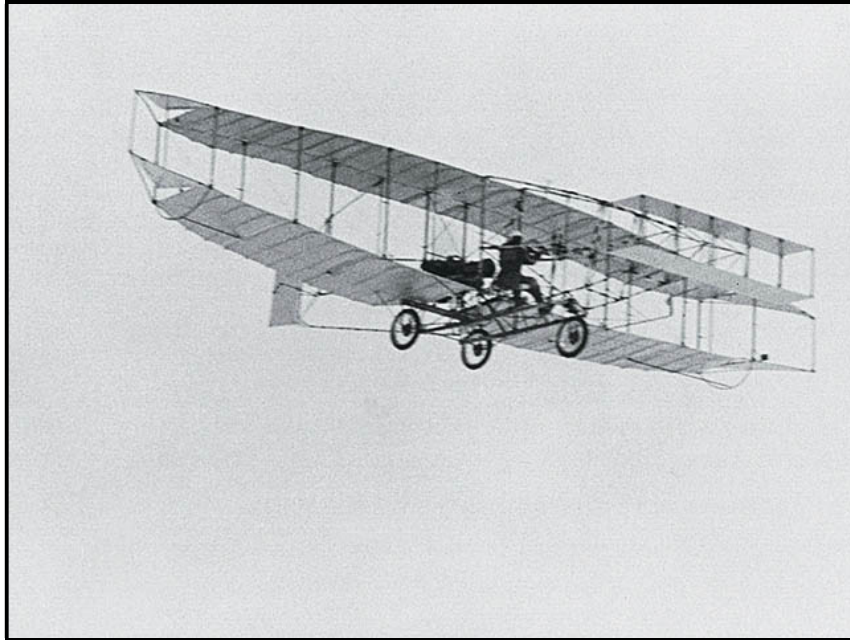
| Date | Surface 1 st oz. | Surface Each oz. | Air Mail Letter 1 st oz. | Air Mail Letter Each oz. | All-Up Letter ⁶ 1 st wt. | All-Up Letter ⁶ 2 nd wt.. | Notes |
|-------------------|--------------------------------|---------------------|---|-----------------------------------|--|---|-------|
| April 1, 1987 | | | | | 36 | 55 | 10 |
| January 1, 1988 | | | | | 37 | 57 | |
| January 1, 1989 | | | | | 38 | 59 | 11 |
| January 1, 1990 | | | | | 39 | 61 | |
| January 1, 1991 | | | | | 40 | 63 | |
| January 1, 1992 | | | | | 42 | 65 | |
| January 1, 1993 | | | | | 43 | 67 | |
| March 1, 1994 | | | | | 43 | 69 | |
| August 1, 1995 | | | | | 45 | 71 | |
| October 1, 1997 | | | | | 45 | 71 | |
| January 1, 1999 | | | | | 46 | 73 | 12 |
| January 1, 2001 | | | | | 47 | 75 | |
| January 14, 2002 | | | | | 48 | 77 | |
| January 12, 2004 | | | | | 49 | 80 | |
| January 17, 2005 | | | | | 50 | 85 | |
| January 16, 2006 | | | | | 51 | 89 | 15 |
| January 16 2007 | | | | | 52 | 93 | |
| January 14, 2008 | | | | | 52 | 96 | |
| January 12, 2009 | | | | | 54 | 96 | 13 |
| February 23, 2009 | | | | | 54 | 98 | |
| January 11, 2010 | | | | | 57 | 100 | 14 |
| January 17, 2011 | | | | | 59 | 103 | |
| January 16, 2012 | | | | | 61 | 105 | |
| January 14, 2013 | | | | | 63 | 110 | |
| March 31, 2014 | | | | | 85 | 120 | 15 |
| January 14, 2019 | | | | | 90 | 127 | 15 |
| January 13, 2020 | | | | | 92 | 130 | 15 |
| | | | | | | | |

Notes for Table 2.

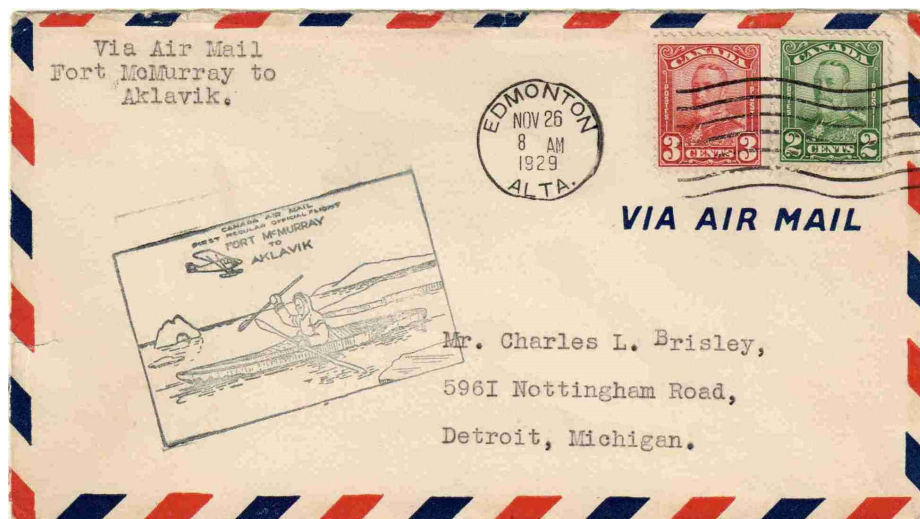
1. Before official Canadian air mail began, a number of semiofficial air mail routes were conducted by private airlines and this subject is discussed in Chapter 3 of AMCN. In addition Canadians could address a letter to a distant Canadian city and pay the surface rate of 3¢ plus the US air mail rate of 10¢ using a USA stamp (2). This was expected to be carried by train to a near US city, by air to a US city near the destination, then by train to the Canadian destination. See Table 1.
2. War tax removed from surface and air mail rates.
- 2* Several authors (1, 2, 3) gave a variety of dates in August 1928 for the start of the 5 cent airmail rate. However, recent research has found:
 - A *Globe* (Toronto) article dated August 30, 1928 quotes the PMG as predicting a 5 cent rate in the future.
 - A *Globe* article dated September 27, 1928 announced a 5 cent air mail rate on the Toronto-Montreal route starting on October 1, 1928. (23)
Initially the 5 cent rate was only charged for the air mail service between Toronto and Montreal. Mail continued to be flown without extra charge on the Air Stage services to remote locations.

But when a First Flight cachet was provided for the new Air Stage services, the cachet was only applied to covers franked at the air mail rate.

3. 1 cent war tax reinstated on first oz. of surface and ari mail rates.
4. 2 cent war tax included in first oz. of surface and air mail rates.
5. All-Up introduced for 1 oz. letter on April 1, 1948. Carried All-Up by air if that was the best way. Heavier letters used previously published surface or air mail rates.
6. July 1, 1951 war tax ended but postage increase incorporated so that total rates remain unchanged.
7. All-Up policy was extended to 8 oz. first class mail. Separate air mail and surface rates were abolished. All First Class letter mail was carried by surface or by air if that was the best way. Canada Post stopped using the All-Up name.
8. 1st Wt. up to 1 oz., 2nd Wt. up to 2 oz. Rates for 4, 8, and 12 oz. letters were used from July 1, 1972 to July 1, 1979.
9. After July 1, 1979 1st Wt. up to 30g, 2nd Wt. up to 50g. Rates for 100g, 150g, 200g and 250g were used through January 1, 1988.
10. After April 1, 1987 Rates for 30g, 50g, 100g, 150g, 200g, 250g, plus special rates for non-standard sizes to 30g and 50g.(6,
11. After January 1, 1989 Rates for 30g, 50g, 100g, 200g, 300g, and 500g, plus special rates for non-standard sizes to 30g and 50g. Oversize rates available to 500 g (6, 15).
12. After January 1, 2009 Standard Letter weights of up to 30g and 50g are listed in this table. "Other Lettermail" odd sizes and overweight rates of 100g, 200g and 500g available, as are odd shapes for 30g and 50g (6, 15)
13. Recent fees taken from Canada Post *Postal Prices* brochures or www.CanadaPost.ca.
14. After about 2010 a postage discount was available if a postage meter was used rather than stamps. See website https://adminware.ca/checklist/chk_rate.htm
15. After 2014 a single stamp purchase to mail a domestic letter is charged a 15c premium. If a booklet or coil is purchased the premium is waived.
16. In 2006 Canada Post began to issue Permanent Stamps, indicating by the letter P, that are always worth the basic domestic mailing rate.
17. August 24 and 29, 1928: 5 cent rate for covers to be carried on flights to commemorate the 50th anniversary of the Canadian National Exhibition and receive souvenir cachet.



AEA Silver Dart, First Canadian Airplane 1908
Source: Canada Forces



Edmonton to Detroit November 1929 via Aklavik



Vancouver to Kingston May 1936



Vancouver to Ottawa March 1939

III. Surface and Air Mail Letter Rates to the USA: 1925-2019

From March 1, 1976 surface and air mail letter rates were eliminated and all First Class letters between Canada and the US were carried by surface or, space available, by air if expedient.

Table 3
Surface and Air Mail Letter Rates to the USA: 1925-2011 (1, 3, 6, 15). Rates: ¢.

| Date | Surface 1 oz. | Air Mail Letter 1oz. | Air Mail Letter Each 1oz. | To USA Letter 1 st Wt. | To USA Letter 2 nd Wt. | Notes |
|------------------|------------------|-------------------------|------------------------------|--------------------------------------|--------------------------------------|-------|
| August 25, 1928 | 2 | 5 | 10 | | | |
| July 1, 1931 | 3 | 6 | 10 | | | 1, |
| August 1, 1932 | 3 | 8 | 13 | | | 1 |
| July 1, 1934 | 3 | 6 | 6 | | | 1 |
| April 1, 1943 | 4 | 7 | 6 | | | 2,5 |
| November 1, 1946 | 4 | 7 | 5 | | | 5 |
| April 2, 1951 | 4 | 7 | 5 | | | 5 |
| July 1, 1951 | 4 | 7 | 5 | | | 3 |
| April 1, 1954 | 5 | 7 | 5 | | | |
| November 1, 1963 | 5 | 7 | 5 | | | |
| July 15, 1964 | 5 | 8 | 6 | | | |
| November 1, 1968 | 6 | 10 | 10 | | | |
| July 1, 1971 | 7 | 10 | 10 | | | |
| January 1, 1972 | 8 | 10 | 10 | | | |
| March 1, 1976 | Ends | Ends | Ends | 10 | 9 | 4, 5 |
| March 1, 1977 | | | | 12 | 10 | |
| April 1, 1978 | | | | 14 | 12 | |
| April 1, 1979 | | | | 17 | 14 | |
| July 1, 1979 | | | | 17 | 30 | 6 |
| January 1, 1982 | | | | 35 | 50 | |
| January 15, 1983 | | | | 37 | 53 | |
| June 24, 1985 | | | | 39 | 56 | 7 |
| April 1, 1987 | | | | 42 | 60 | |
| January 1, 1988 | | | | 43 | 63 | |
| January 1, 1989 | | | | 44 | 64 | |
| January 1, 1990 | | | | 45 | 65 | |
| January 1, 1991 | | | | 46 | 67 | |
| January 1, 1992 | | | | 48 | 70 | |
| January 1, 1993 | | | | 49 | 72 | |
| March 1, 1994 | | | | 50 | 74 | |
| August 1, 1995 | | | | 52 | 77 | |
| January 1, 1999 | | | | 55 | 88 | 8 |
| January 1, 2001 | | | | 60 | 85 | |
| January 14, 2002 | | | | 65 | 90 | |
| January 12, 2004 | | | | 80 | 98 | |

| Date | Surface 1 oz. | Air Mail Letter 1oz. | Air Mail Letter Each 1oz. | To USA Letter 1 st Wt. | To USA Letter 2 nd Wt. | Notes |
|------------------|------------------|-------------------------|------------------------------|--------------------------------------|--------------------------------------|-------|
| January 17, 2005 | | | | 85 | \$1.00 | |
| January 16, 2006 | | | | 89 | \$1.05 | |
| January 16, 2007 | | | | 93 | \$1.05 | |
| April 16, 2007 | | | | 93 | \$1.10 | |
| January 14, 2008 | | | | 96 | \$1.15 | |
| January 12, 2009 | | | | 98 | \$1.18 | 9 |
| January 11, 2010 | | | | \$1.00 | \$1.22 | |
| January 17, 2011 | | | | \$1.03 | \$1.25 | |
| January 16, 2012 | | | | 1.05 | 1.29 | |
| January 14, 2013 | | | | 1.10 | 1.34 | |
| January 13, 2014 | | | | 1.10 | 1.34 | |
| March 31, 2014 | | | | 1.20 | 1.80 | 10 |
| January 14, 2019 | | | | 1.27 | 1.90 | |

Notes for Table 3.

1. Includes 1¢ war tax per item for surface and air mail rates.
2. Included war tax increased to 2¢ per item for surface and air mail rates.
3. War tax ended. Postage increased in the basic letter rate leaving total unchanged.
4. After March 1, 1976, surface and air mail rates abolished. First Class mail carried by surface or air if expedient.
5. 1st Wt. was 1 oz., 2nd wt. each additional 1 oz.
6. After July 1, 1979, 1st Wt. up to 30g, 2nd Wt. up to 50g., 3rd Wt., and up to 100g, to 250, and 500g.
7. Accept up to 2 kg.
8. After January 1, 2009, Standard Letter weights of up to 30g and 50g are listed in this table. “Other Lettermail” odd sizes and overweight rates of 100g, 200g and 500g available, as are odd shapes for 30g and 50g (6, 15)
9. Recent fees taken from Canada Post *Postal Prices* brochures or www.CanadaPost.ca. See also http://adminware.ca/checklist/chk_rate.htm.
10. Single stamp mailings. A person who purchases a single stamp at a post office counter to mail a domestic 0-30g letter is charged a 5c premium. This premium is waived if a booklet or coil is purchased

IV International Air Mail Letter Table March 1, 1930

By 1929 there was a wide range of countries that had published air mail rates in their countries or territories (3, 4, 11). Two examples, as shown in Table 4, include rates for mail via London and Paris (4, 11) to British or French airline destinations. These rates were announced in the July 1929 United States *Postal Guides* but not by Canada Post.

Table 4

International Rates from London or Paris announced July 1929 US *Postal Guide*. Rates are in addition to ordinary postage to the country: Letters 5¢ 1st oz., 3¢ each additional oz.; Postcards 3¢.

| Air mail via | Destination Countries | 1 oz. Rate plus ordinary postage |
|---------------------|---|---|
| London | North Africa: Algeria, Morocco (French Zone), Tangier, Tetuan, Larache, Tunis. (Ordinary postage to Tunis Letters 2¢ 1 st oz, 1¢ Postcard) | 8¢ |
| London | West Africa: French Guinea, Senegal, Gambia, Belgian Congo, Sierra Leone | 24¢ |
| London | Austria, Czechoslovakia, Denmark, Norway, Sweden | 6¢ |
| London | Belgium, Cyprus, Danzig (free city), France, Italy, Germany, Netherlands, Switzerland | 4¢ |
| London | Estonia (Tallinn) Finland, Latvia, Lithuania, Memel | 10¢ |
| London | Greece | 8¢ |
| London | India, Aden, Ceylon, Straits Settlements etc., to overtake the ordinary mail of the previous day. | 4¢ |
| London | India per ½ oz. | 12¢ |
| London | Persian Gulf Ports per ½ oz. | 12¢ |
| London | Russia and Siberia | 14¢ |
| London | Egypt and Anglo-Egyptian Sudan (a) Per ½ oz. on air route No. 3, which gives delivery to Alexandria in four days. | 5¢ |
| | (b) Per 1 oz. for air routes No. 1 & No. 5 which overtakes preceding mails and gains up to two days. | 4¢ |
| London | Iraq, Kuwait, Persia (a) Per ½ oz. on air route No. 3 | 9¢ |
| | (b) Per 1 oz. for ordinary route to Gaza and thence by air | 6¢ |
| | (c) Per 1 oz. by air to Marseilles to overtake mail on ordinary route to Gaza. | 10¢ |
| London | Palestine, Syria, Transjordan (a) Per ½ oz. on air route No. 3 | 5¢ |
| | (b) Per 1 oz. via Alexandria | 4¢ |
| Paris | Africa West Coast | 24¢ |

| Air mail via | Destination Countries | 1 oz. Rate plus ordinary postage |
|--------------|--|----------------------------------|
| Paris | Algeria, Austria, Czechoslovakia, Denmark, Hungary, Poland, Sweden, Tunis | 6¢ |
| Paris | Belgium, France, Netherlands, Switzerland | 4¢ |
| Paris | Bulgaria, Kingdom of Serbs, Croates and Slovenes, Morocco, Romania & Turkey (Europe) | 8¢ |
| Paris | Great Britain, Spain. (Ordinary postage: Letters 1oz. 2¢, Post Cards 1¢) | 4¢ |

Table 5 shows some of the other international rates available before March 1, 1930.

Table 5.

International Rates available until the March 1, 1930 rates announcement. Rate: ¢

| Date Introduced | Country | Air Rate per ½ oz. Plus ordinary postage |
|-----------------|--|--|
| Feb 2, 1929 | Panama & Canal Zone | 25 |
| Feb 1929 | Via USA | |
| | Bahamas, Cuba | 5 |
| | Dominican Rep, Puerto Rico | 15 |
| Mar 1929 | Mexico | 10 |
| June 1929 | Via Miami and Cristobal | |
| | British Honduras, Honduras | 15 |
| | Nicaragua | 25 |
| | Ecuador | 40 |
| | Peru | 55 |
| July 1929 | Colombia, Dutch West Indies | 40 |
| July 1929 | Australia (within only) | 6 |
| July 17, 1929 | Chile | 70 |
| Aug. 1929 | Bolivia | 55 |
| Aug 1929 | Bahamas suspended until Jan 1, 1930 | |
| Sept 2, 1929 | Guatemala | 15 |
| Sept 29, 1929 | US Virgin Is. Antigua, St. Lucia, Trinidad | 25 |
| | British & Dutch Guiana | 40 |
| | Venezuela | 40 |
| Nov. 1929 | Argentina, Paraguay, Uruguay | 75 |
| | El Salvador | 15 |

The column “Canadian Air Mail Notes,” *Airpost Journal* March 2014, discusses the fact that Brazil is not to be found in Table 5. In 1929 the FAM 9 route was in operation and announced in the November 1929 *Monthly Supplement to the Canadian Postal Guide*. This route carried mail down the west coast of South America to Santiago and then to Buenos Aires and Montevideo. There was no air mail service available to Brazil. The US Post Office awarded the FAM 10 contract from Miami to Brazil on August 20, 1930.

This column also notes that the surface rate to Argentina in November 1929 was the UPU rate of 8 cents or for air mail a total of $75 + 8 = 83$ cents. There was some confusion in Canada at the time, so the first flight cover shown below from Montreal through Miami to Buenos Aires was posted with 80 cents. Two months later the January 1930 *Monthly Supplement* noted that after Christmas Day 1929 the surface rate to any place in South America would be 2 cents, reducing the total air mail postage to $75 + 2 = 77$

cents per ½ oz. Table 6 (part 2) below shows that as of March 1, 1930 the rate to Argentina was reduced to a total of 60 cents (including surface).



Cover Postmarked Montreal Oct 29. FAM 9 First Flight Miami to Buenos Aires. Backstamped October 14, 1929.

In November 1929, the District Superintendent of the Saskatchewan District, F. M. MacNaughton, (2) submitted a table of air mail surcharges for approval by the Post Office Department. That 1929 list was for surcharges over and above the surface rate to these destinations. It was a complex table, not reproduced here, and was never implemented. It is mentioned in the literature that this may have prompted a more thorough study. A combined air mail rates table was subsequently published in the March 1, 1930 (2, 3) issue of the *Monthly Supplement* of the Official Post Office *Postal Guide* (Canada) and the April 1930 supplement. This is shown in Table 6 parts 1 and 2. This combined rate table included both the surface rate and air mail rates for all needed air mail and surface services. Other services like registration and special delivery were extra. Subsequent *Monthly Supplements* added countries in June and December, Tables 7 and 7a.

The first official international air mail rate tables were published March 1, 1930, in the *Weekly Bulletin*. These rates were all-inclusive for all available air mail services and all needed surface services as well.

Table 6
International Air Mail Table March 1, 1930. (2, 3, 4)

These rates were in effect from March 1930 to February 1931.

1. Postage Including fee for air mail service in Canada and the United States only
Rates: ¢. Surface postage included.

| Country | First oz. | Each additional oz. (2) |
|--|-----------|-------------------------|
| Canada and United States | 5 | 10 |
| Great Britain and all other places in the British Empire, France and all places in North & South American continents (other than Canada & the United States) | 7 | 12 |
| Other Countries | 13 | 14 |

Note: there are some typos in some works. Reference 2 is correct

2. Air Mail Rates-Postage including fees for all air mail services

Available enroute and in a country of destination

Rate: ¢. Weight each ½ oz. unless noted as each oz. Surface postage included.

| Country | Rate/Weight | Country | Rate/Weight |
|---------------------|-------------|---|-------------|
| Aden | 15 / oz. | Italy | 15 / oz. |
| Algeria | 15 | Japan | 15 |
| Antiqua | 25 | Jugo-Slavia | 20 / oz. |
| Argentina | 60 | Kenya & Uganda | 10 / oz. |
| Australia | 10 | Leeward Islands | 25 |
| Austria | 15 / oz. | Malay States | 15 |
| Bahamas | 10 | Martinique | 25 |
| Barbados | 25 | Mexico | 25 |
| Belgian Congo | 15 / oz. | Morocco | 15 |
| Belgium | 15 / oz. | Nicaragua | 15 |
| Bolivia | 45 | Norway | 20 / oz. |
| British East Africa | 15 / oz. | Palestine | 10 |
| British Guiana | 35 | Panama & Canal Zone | 25 |
| British Honduras | 20 | Paraguay | 60 |
| Bulgaria | 20 / oz. | Persia | 15 |
| Ceylon | 15 | Persian Gulf Ports | 15 |
| Chile | 55 | Peru | 45 |
| Columbia | 35 | Poland | 15 / oz. |
| Corsica | 20 / oz. | Porto Rico | 15 |
| Costa Rica | 25 | Romania | 20 |
| Crete | 20 | St. Christopher St Kitts | 25 |
| Cyprus | 15 / oz. | St. Lucia | 25 |
| Czechoslovakia | 15 / oz. | St. Vincent | 25 |
| Danzig | 15 / oz. | Salvador | 20 / oz. |
| Denmark | 15 / oz. | Senegal, French Soudan & Upper Volta | 35 |
| Dominica | 25 | Sierra Leone | 35 |
| Dominican Republic | 15 | South Africa | 15 / oz. |
| Dutch East Indies | 15 | Spain | 15 / oz. |
| Dutch Guiana | 35 | Straits Settlements | 15 |
| Dutch West Indies | 25 | Sudan | 10 |
| Ecuador | 35 | Sweden | 15 / oz. |
| Egypt | 10 | Switzerland | 15 / oz. |
| France | 15 / oz. | Syria | 15 |
| French Guiana | 35 | Tanganyika | 15 / oz. |
| French India | 15 | Trans-Jordan | 15 |
| Germany | 15 / oz. | Trinidad & Tobago | 25 |
| Greece | 20 / oz. | Tunis | 15 |
| Guadeloupe | 20 / oz. | Turkey | 20 / oz. |
| Guatemala | 25 | Uganda | 15 / oz. |
| Haiti | 15 | Uruguay | 60 |
| Holland | 15 | Venezuela | 35 |

| | | | |
|------------------------------------|--------------------|------------------|--------------------|
| Honduras | 20 | Windward Islands | 25 |
| Country | Rate/Weight | Country | Rate/Weight |
| India In General | 15 | Zanzibar | 15 / oz. |
| Bombay, Delhi, Madras and Calcutta | 20 | | |
| Iraq | 15 | | |

Table 7. June 1930 Supplement
Rate ¢, Weight each ½ oz. unless noted as each oz.

| Country | Rate/Weight |
|-------------------|--------------------|
| Finland | 20 / oz. |
| French Guiana | 35 |
| Gambia | 15 |
| Hungary | 15 |
| Russia (U.S.S.R.) | 25 |

Table 7a. December 1930 Supplement
Rate ¢, Weight each ½ oz. unless noted as each oz.

| Country | Rate/Weight |
|---------------------------------|--------------------|
| Brazil | 55 |
| Dutch East Indies via Holland | 35 |
| Jamaica | 15 |
| Malay States via Holland | 30 |
| Straits Settlements via Holland | 30 |



Cover 1. Postmarked on February 1, 1931, so the “old” rates from March 1930, Table 6, applied. It is correctly franked at 7 cents for a cover to England that was flown within Canada and the United States, and then continued by surface routes. The two violet bars through “Via Air Mail” on COVER 1 were routinely applied in New York to mark the end of air mail service (22).



Cover 2. Postmarked on January 15, 1931, so the rates from March 1930, Table 6, still applied. It is therefore correctly franked at the Empire rate of 7 cents, for a cover to be flown within Canada, and to then continue by surface routes to Australia. [This choice of rate is the one that is usually found on Canadian First Flight Covers to overseas destinations in 1930. It seems that collectors were mainly interested in the First Flight cachet, so opted for the cheaper postage rate, and very rarely paid the higher rate to include all available air mail services.] (22).

V. International Air Mail Letters (except USA): 1931- 1939

Starting in 1931, the Supplemental Guides provided air mail postage rates based on large geographical areas (1, 2, 3, 4, 11) rather than individual countries. This policy continued through 1971 when universal air mail rates were established.

1. The PAA Pacific destinations were made available to Canadian postal customers as they developed. Canadian mail to other points in Asia and Australasia continued to be carried by sea to Europe and by European carriers, usually the British airline Imperial Airways, but cachets requesting KLM are known.
2. The Empire All-Up air mail rate began in February 1938, providing air mail service from Great Britain to select British Empire countries for all First Class mail and postcards at a special low rate. The All-Up rate ended in September 1939, and mail to these countries returned to the geographical area rates.
3. In May 1939 Pan American inaugurated transatlantic operations between New York and Lisbon and then Ireland. Imperial Airways conducted 8 flights between Foynes and New York in autumn 1939 and BOAC conducted 8 flights in autumn 1940 but did not continue. Later BOAC transatlantic flights did not routinely carry commercial mail but were reported to carry diplomatic mail.

Table 8
International Air Mail Letters (except to USA): 1931- 1939 (1, 2, 3, 4, 11)
Air Mail over land, by surface across Atlantic or Pacific. Rates: ¢.

| Country | Feb 2 1931 | Jul 1 1931 | Jul 1 1934 | Jul 1 1935 |
|--|---------------|---------------|---------------|---------------|
| West Indies, Mexico, Cuba, Central America, British Guiana ½ oz. | 15 | 15 | 35 | 25 |
| Bermuda Note 1 | | | | |
| Asia per ½ oz. | 15 | 15 | 35 | 25 |
| Africa per ½ oz. | 15 | 15 | 35 | 25 |
| Australasia ½ oz. Note 2 | 15 | 15 | 35 | 35 |
| Europe per oz. Note 5 | 10 | 10 | 10 | 10 |
| United Kingdom and Ireland, first oz. Note 3 | 5 | 6 | 6 | 6 |
| South America except British Guiana first ½ oz. | 45 | 45 | | |
| South America (a, b, c) per ½ oz. Note 4 | | | 55 | 50 |
| South America (d,e) per ½ oz. Note 4 | | | 85 | 70 |
| South America (a,b,c) per ¼ oz. Note 4 | | | | |
| South America (d,e) per ¼ oz. Note 4 | | | | |
| Empire Air mail Note 5 | | | | |

Table 8 (continued)

**International Air Mail Letters (except to USA): 1931- 1939 (1, 2, 3, 4, 11). Air mail over land,
By surface across Atlantic or Pacific until PAA services start 1936 and 1939. Rates: ¢.**

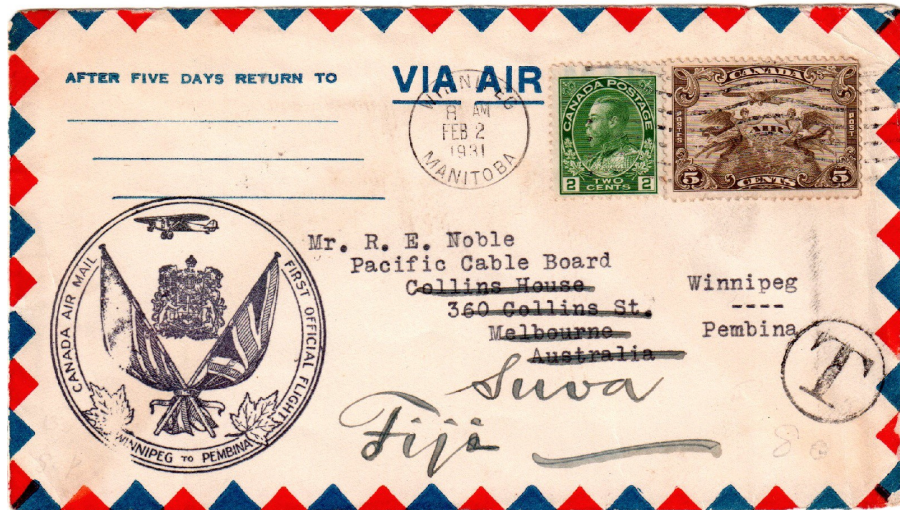
| Country | Jan 23 1936 | Dec 15 1937 | Feb 23 1938 | Jun 24 1939 | Sept 3 1939 | Nov 1939 |
|---|------------------------|------------------------|------------------------|------------------------|------------------------|---------------------|
| West Indies, Mexico, Cuba, Central America, British Guiana ½ oz. | 25 | 10 ¼ oz. | 10 ¼ oz. | 10 ¼ oz. | 10 ¼ oz. | 10 ¼ oz. |
| Newfoundland ½ oz. | | | | 10 | 10 | 6 |
| Asia per ½ oz. | 25 | 25 | 25 | 25 | 25 | 30 |
| Africa per ½ oz. | 25 | 25 | 25 | 25 | 25 | 30 |
| Asia, Africa ½ oz. PAA Transatlantic | | | | | | 60 |
| Australasia ½ oz. Note 2 | 35 | 35 | 35 Note 7 | 35 | 35 | 30 |
| Europe per oz. | 10 | 10 | 10 | 10 | 10 | 10 |
| Europe per ½ oz. PAA Transatlantic | | | | 30 Note 10 | 30 | 30 |
| United Kingdom and Ireland, per oz. | 6 +5 ea. oz. | 6 +5 ea. oz. | 6 +5 ea. oz. | 6 +5 ea. oz. | 6 +5 ea. oz. | 6 +5 ea. oz. |
| South America (a, b, c) per ½ oz. Note 6 | 50 | | | | | |
| South America (d,e) per ½ oz. Note 6 | 70 | | | | | |
| South America (a,b,c) per ¼ oz. Note 6 | | 25 | 25 | 25 | 25 | 25 |
| South America (d,e) per ¼ oz. Note 6 | | 35 | 25 | 35 | 35 | 35 |
| Empire Air Mail Note 7 | | | 6 4 card | 6 4 card | End Note 11 | |
| Hawaii ½ oz. | 25 | 25 | 25 | 25 | 25 | 25 |
| Guam | 50 | 50 | 50 | 50 | 50 | 50 |
| Manila | 75 | 75 | 75 | 75 | 75 | 75 |
| Macao, Hong Kong | | | 90 | 90 | 90 | 90 |
| Via San Francisco | Note 8 | | Note 9 | | | |

Notes for Table 8

1. Bermuda.

| Date Range | 1 st Oz. | Each Added oz. |
|----------------|---------------------|-------------------|
| December 1931 | 6 | 10 |
| August 1, 1932 | 8 | 13 |
| July 1, 1934 | 6 | 6 |
| March 1, 1938 | 15 each ¼ oz. | 15 each ¼ oz. |
| Sept 1, 1945 | 10 each ¼ oz. | 10 each ¼ oz. |
| June 30, 1953 | See Table 10 | |

2. Australasia: Australia, New Zealand, Papua and, New Guinea, South Pacific Islands.
3. Access to US air mail within US available since July 1925 using Canada surface rate plus US air mail stamp, 10 ¢ per ½ oz. Jan 1, 1928 access to Europe included. Surface in Canada, air mail in US, Surface in Europe.
4. 13¢ per oz., 14¢ each added oz. in Canada and US. Plus optional British air mail to Continental Europe.
5. Domestic Canada air mail and by sea and air mail in Europe until July 31, 1939.
6. South American Country Groups
 - a. Ecuador, Venezuela, Dutch Guiana
 - b. Columbia,
 - c. French Guiana
 - d. Argentina, Bolivia, Brazil, Chile, Paraguay, Uruguay
 - e. Peru
7. Empire All Up air mail rate for all first class mail to select countries. Domestic Canada air mail, surface to GB and, by air on the Empire Route to British Africa, Middle East, India and, Malaya started Feb 23, 1938. Hong Kong and Australasia added April 1939. The All Up rated ended with the onset of war in Europe in September 1939. All non-British Africa, Asia and, Australasia countries continued at the geographic area rates. After September 1939 all rates return to rates shown for geographic rates in Europe, Africa, Asia, and Australasia.
8. Pan American Airways commenced the San Francisco to Manila route on November 22, 1935. Canadians could not use Canadian stamps for first flight covers. US Post Office air mail acceptance was announced January 23, 1936. US rates to Hawaii, Guam and, Manila were reduced in April 1937 to 20¢, 40¢ and 50¢ but this change did not take effect in Canada.
9. PAA extended route from Manila to Macao and, Hong Kong on April 21, 1937. From this date air mail to Australasia from the US connected with Imperial Airways in Hong Kong. Canada use of this route was implied by the United States Postal Bulletin but not announced by Canada Post.
10. PAA's Atlantic routes started in May 1939. Imperial Airways conducted 8 Atlantic flights in autumn 1939 and BOAC conducted 8 flights in autumn 1940 but did not continue. Later BOAC flights probably carried little or no commercial mail. Optional transatlantic air mail rate to most of Europe 30 cents per ½ oz. As early as summer 1941 space restrictions caused most Canadian mail to Europe to be sent by sea.
11. After September 1939 All-Up rate ends. All rates return to rates shown for non-British countries in Europe, Africa, Asia, and Australasia.



COVER 3. Postmarked two weeks after COVER 2, on February 2, 1931, the same day as the new postal rates came into effect, Table 8. Under these rates, the Post Office no longer offered the option of air mail within Canada and the U.S.A., then surface mail to destination. The cover should therefore have been franked 15 cents. It was handstamped T to show Postage Due, and the 80 would correspond to an 80 centimes deficiency. (8 cents discrepancy x 2 = 16 cents postage due x 5 = 80 centimes.) However, there is no indication that postage due was actually collected (22).



COVER 4. Postmarked December 1, 1931. It is correctly franked 45 cents, at the all-inclusive Group 4 rate for South America, Table 8, introduced on February 2, 1931. (22)

VI. International Air Mail Letters (except USA) War Years: 1939-1945

Tables 9, 10 and 11 list the rates for the war years 1939 through 1945. Important war related events affected the mail.

1. After the Imperial All-Up rates ended in September 1939 rates to All-Up countries returned to the geographical categories show in Table 8.
2. After the Mediterranean Sea route was closed, June 1940 by the entrance of Italy to the war, mail to the East was carried from Great Britain to Durban, South Africa and then by the remaining Imperial Routes. The rates remained as shown in Table 8 for the large geographical areas. However, connecting routes were opened from PAA Pacific destinations to countries shown in Table 9. No Canada Post publication has been found detailing the rates beyond the PAA destinations. However, some Canadians used these postage rates to send mail to India, the Middle East and, Africa.
3. The BOAC Hong Kong feeder service from Singapore ended in August 1940 due to pressures from Vichy French in Indo-China. Mail continued to be carried to and from Hong Kong using the CNAC Burma connection through China until the Japanese took over Hong Kong.
4. After December 7, 1941 the PAA Pacific routes closed, but the PAA South Atlantic route to Africa opened to connect to BOAC routes. Rates for this route are shown in Table 11. There were many changes in the route to Africa and some significant suspensions (18, 19).
5. In May 1939, Pan American inaugurated transatlantic operations between New York and, Lisbon and then Ireland. Imperial Airways conducted eight flights between Foynes and New York in autumn 1939 and BOAC conducted 8 flights in autumn 1940 but did not continue. Later BOAC flights usually did not carry commercial mail.
6. As the war in Europe progressed space became tight for Pan American's transatlantic air mail. As early as summer 1941 Canadian 30¢ mail began to be sent by sea. In late 1941 and early 1942, Canadians were warned that most air mail letters would not be flown (3, 17). Canadians were urged to use the alternates that were introduced, including the Armed Forces Air Letter Card, the Aerograph and the Air Letter form (later to become the Aerogramme).
7. Almost as soon as aircraft were being flown to England for the war effort, they carried military mail, but probably no civilian mail. By 1943 a combination of BOAC and TCA conducted the Ferry Command to transport military aircraft to the war theaters. The eastbound aircraft carried military and civilian mail. The westbound flights returned the Ferry pilots and also carried mail. Most air mail that was actually flown between England and Canada was probably carried by the Ferry Command during this time.



Boeing 247 and Lockheed 14 Electra at Edmonton, Alberta
Source: Valentine-Black Co. Ltd., Toronto, Canada

Table 9
International Air Mail Letters (except USA) War Years: 1940- December 1944 (4, 11). Rates ¢

| Country | Nov 1939 | June/July 1940 | August 6 1940 | June 1941 | Dec/Jan. 1941/1942 | April 1942 |
|--|----------------------------------|----------------------------------|----------------------------------|----------------------------------|---|-------------------------------------|
| West Indies, Mexico, Cuba, Central America, British Guiana ½ oz. | 10 | 10 | 10 | 10 | 10 | 10 |
| Asia per ½ oz. | 30 | 30 Note 2 | 30 Note 2 | 30 Note 2 | 30 Note 2 | 30 Note 2 |
| Africa per ½ oz. | 30 | 30 Note 2 | 30 Note 2 | 30 Note 2 | 30 Note 2 | 30 Note 2 |
| Australasia ½ oz. | 30 | 30 Note 2 | 30 Note 2 | 30 Note 2 | 30 Note 2 | 30 Note 2 |
| Europe per oz. | 10 | 10 Note 3 | 10 Note 3 | 10 Note 3 | 10 Note 3 | 10 Note 3 |
| United Kingdom and Ireland, first oz. | 6 | 6 | 6 | 6 | 6 | 6 |
| Europe ½ oz. PAA Transatlantic | 30 | 30 Note 3 | 30 Note 3 | 30 Note 3 | 30 Note 3 | 30 Note 3 |
| Asia Africa ½ oz. PAA Transatlantic | 60 | | | | | |
| PAA Transpacific Hawaii ½ oz. Guam Manila Macao, Hong Kong New Zealand, Aust. Singapore Via San Francisco | 25 50 75 90 -- -- | 30 50 75 90 75 -- | 30 50 75 90 75 -- | 30 50 75 90 75 90 | Japanese attacks end Pacific routes except Hawaii | |
| PAA Transpacific Australia ½ oz. Canton Island New Caledonia | | 90 45 60 | PAA Trans-pacific Table 10 | PAA Trans-pacific Table 10 | Ended | |
| PAA via Brazil and Africa Note 4 | | | | | Table 9 | |
| South America (a,b,c) per 1/4 oz. Note 1 | 25 | 25 | 25 | 25 | 25 | 25 |
| South America (d,e) per ¼ oz. Note 1 | 35 | 35 | 35 | 35 | 35 | 35 |
| Armed Forces Letter Card To/From Armed Forces | | | | | | 10¢ 6d, 3d, or FREE Note 5 |
| Airgraph Note 6 | | | | | 10 to Service | 15 to Civilian 6 to Service |

Notes for Table 9

1. South American Country Groups
 - a. Ecuador, Venezuela, Dutch Guiana
 - b. Columbia,
 - c. French Guiana
 - d. Argentina, Bolivia, Brazil, Chile, Paraguay, Uruguay
 - e. Peru
2. Germany invades Europe May 1940 and Italy declares war June 1940, closing the Mediterranean to civil aviation. Cuts that part of the Empire Route between Europe and Eastern countries. By August 1940 mail carried by sea between Great Britain and Durban, South Africa to be carried by the remaining Empire Route.
3. November 1940: air mail accepted for these European countries only: Gibraltar, Portugal, Spain, Switzerland, Vatican City and Unoccupied France.
 - a. Sweden added in June 1942 40¢ per ½ oz.
4. PAA route Miami, Natal, Africa commenced Dec. 7, 1941, just as the Japanese attacks ended the transpacific routes. The exact Atlantic routing of mail varied between 1942 and 1945, and there were significant route suspensions (19, 20). Air mail for this route to be endorsed "Via Miami and West Africa". See Table 11 for rates.
5. In order to handle the mail load to and from Armed Forces during the war, a special Armed Forces Letter Card made available in April 1942. In September 1944 the card was open to correspondence between civilians in Canada and overseas. This mail was usually carried by military air services rather than commercial airlines. For Christmas 1944 Canadian Forces overseas and British personnel in Canada were granted "FREE" privileges. The British also supplied similar forms from about 1942, and some were "FREE" as well. In March 1944 the rate for service personal in any theater to Canada was reduced to 3d The last known use by a Canadian is February 6, 1946 (7)
6. Airgraph letter form was photographed by Kodak at source and printed at destination saving cargo space. Originally intended for servicemen only to Great Britain, quickly expanded to almost all locations where Canadians were stationed, civilian or service. Airgraph was originally free for all servicemen but Canadian civilians paid the fees. Airgraph use ended August 1945.
 - a. 15 Nov. 1941 10¢ to servicemen only
 - b. 15 June 1942 15¢ to civilians, 6¢ to servicemen
 - c. May 1944 5¢ to/from servicemen, 5¢ to/from civilians
7. December 12, 1942, all air mail service was officially limited to Airgraph and Air Letters since most Canada air mail was being sent by sea. By February 1943 some air mail was carried to and from the UK by the R.A.F. Ferry Command, which transported aircraft to the U.K. and returned pilots to North American locations.



Toronto Daily Star
December 14, 1942



Pan American Airways First Flight Shediac to Foynes, June 1942



Vancouver to Chungking China December 1940, via the Pacific through Hong Kong.

BOAC Mediterranean route is closed to civil aviation in June 1940 by Italy's entrance into the war. PAA transpacific Routes become the alternative for the sea route through Durban for mail to Asia, India, Middle East and, Africa. Rates in effect approximately August 6, 1940, to December 7, 1941, when the PAA routes were closed by Japanese attacks. (5) Routing could be via Hong Kong through China, via New Zealand after June 1940 or via Singapore after June 1941. Rates beyond the PAA destinations were never published by Canada Post, but covers are known with these rates nonetheless.

Table 10
PAA Transpacific Air Mail Letter Rates: August, 1940-December 7, 1941.
On July 18, 1941 a flat rate of \$1.10 was established. (4, 11). Rates: ¢.

| County | Rate ½ oz. Aug. 6, 1940 | Rate ½ oz. Nov. 1, 1941 | Country | Rate ½ oz. Aug 6, 1940 | Rate ½ oz. Nov. 1, 1940 |
|------------------|----------------------------|----------------------------|--------------------|---------------------------|----------------------------|
| Aden | 70 | | Egypt | 70 | |
| Australia | 90 | | Hawaii | 30 | |
| N. Borneo | 70 | | Iran | 70 | |
| Canton Is. | 45 | | Kenya-Uganda | 85 | |
| Afghanistan | 70 | | Madagascar | | 90 |
| Bahrain Is. | 70 | | Mozambique | | 90 |
| Brunei | 70 | | New Guinea | 70 | |
| Ceylon | 70 | | Nyasaland | 90 | |
| Sudan | 70 | | Reunion | 90 | |
| Baluchistan | 70 | | Southwest Africa | 95 | |
| Burma | 70 | | Tanganyika | 85 | |
| China unoccupied | 70 | | South Africa | 95 | |
| Cyprus | 70 | | French Indochina | 70 | |
| Guam | 50 | | Hong Kong | 90 | |
| India | 70 | | Lebanon | 70 | |
| Japan | 70 | | Malay States | 70 | |
| Macao | 70 | | Netherland Indies | 70 | |
| Mauritius | -- | 90 | New Zealand | 75 | |
| New Caledonia | 60 | | Palestine | 70 | |
| N. Rhodesia | 90 | | Sarawak | 70 | |
| Philippines | 75 | | Strait Settlements | 70 | |
| S. Rhodesia | 90 | | Thailand | 70 | |
| Syria | 70 | | Zanzibar | 85 | |
| Trans Jordan | 70 | | Fiji | 60 | |

Notes for Table 10:

1. This table is largely taken from USPO publications. Canada Post published some of these rates (4, 14).
2. Covers have been seen to:
Belgium Congo: From Montreal July 30, 1941, Leopoldville October 20, 1941, \$3.60 total 90¢ per ½ oz.
Cameroons: From Montreal January 1, 1941, Rec March 17, 1941. 90¢
Cairo: From Toronto August 5, 1941, 90¢
Palestine: more common destination.
India: more common destination.

Table 11
PAA Transatlantic Air Mail Letters via Miami, Natal, West Africa: 1941-1945. (3, 4, 11)
Rates for countries served by the PAA Miami, Natal, West Africa
Routes from December 1941 through January 1945 (20).

| Country | Rate ½ oz. |
|---|-------------------|
| Gambia, Nigeria | 65¢ |
| Belgian Congo, Uganda, Kenya, Tanganyika, N & S Rhodesia, Nyasaland, Mozambique, Angola, French Equatorial Africa, Cameroons, Mauritius, South Arica, South West Africa, Spanish Guinea, Zanzibar, unoccupied China, New Zealand, Australia | 75¢ |
| Liberia, Gold Coast, Sierra Leone, Liberia, Anglo Egyptian Sudan, Egypt, Palestine, Trans Jordan, Syria, Lebanon, Saudi Arabia, Cyprus, Iraq, Malta, Turkey, Aden | 90¢ |
| Afghanistan, Bahrain Island, Ceylon, India, Iran, Netherlands East Indies, Burma, Singapore | \$1.00 |

Notes for Table 11 (3, 4, 21)

1. Air mail letters should be endorsed “Via Miami and West Africa”.
2. Air mail letters to China announced March 1942 rate 75¢, probably assuming the CNAC Burma route was open. But the CNAC Burma to China route ended March 8, 1942.
3. Burma and Netherland East Indies suspension announced June 1942, due to the March 1942 Japanese takeover of these countries.
4. Air mail letters only to Unoccupied China announced August 1942 probably using “over the hump” CNAC route India to China, which started April 1942. Rate 75¢ and should be endorsed additionally “Via CNAC from Calcutta”.



Short S23 C-Class *Clare*
Source: www.tonymadgehjg.proboards.com

VII. International Air Mail Letter Rates (except USA): 1944-2020

After the war ended, connections were re-established where necessary. Rates continued to be based on large geographic areas with a few exceptions, Table 12.

On July 1, 1971, the geographical international surface and air mail rates were ended. Uniform letter air mail rates were established to all parts of the world based on the weight in oz., Table 13.

On July 1, 1979, the uniform world air mail letter rates were converted to metric weight in keeping with the overall change in Canada to metric units. This continues to the present, Table 14.

Table 12
International Air Mail Letter Rates (except USA): 1944-1971. (1,3,4,11) Rates ¢

| Country | Dec. 1, 1944 | Sept. 31, 1945 | Mar. 1946 | Nov 1, 1946 | Apr. 2, 1951 | Jul. 1,1953 | Nov. 1, 1963 | Jun. 1, 1967 | Jul. 1, 1970 |
|--|-----------------|-------------------|--------------|----------------|-----------------|----------------|-----------------|-----------------|-----------------|
| West Indies, Mexico, Cuba, Central America, British Guiana | 10 | 10 | 10 | 10 | 10 | | | | |
| South America(c) ½ oz. Note 1 | 75 | 15 | | | | | | | |
| South America (a,b) ¼ oz.Note 1 | 25 | | | | | | | | |
| South America (d,e) ¼ oz. Note 1 | 35 | | | | | | | | |
| South America (b) ¼ oz. Note 1 | 25 | 25 | 25 | 25 | 25 | | | | |
| South America (a,e) ¼ oz. Note 1 | | 15 | 15 | 15 | 15 | | | | |
| South America (d) ¼ oz. Note 1 | | 20 | 20 | 20 | 20 | | | | |
| South America ¼ oz. Note 2 | | | | 10 | 10 | | | | |
| Asia ¼ oz. | Table 8 | 50 | 50 | 25 | 25 | | | | |
| Africa ¼ oz. | Table 8 | 50 | 50 | 25 | 25 | | | | |
| Australasia ¼ oz. Note 3 | Table 8 | 75/50 Note 7 | 75/50 | 25 | 25 | | | | |
| Hawaii | 30 | 35 | 35 | 15 | USA | | | | |
| Guam | -- | 64 | 60 | 25 | 25 | | | | |
| Fiji | | 65 | 50 | 25 | 25 | | | | |
| China (unoccupied) | | 75 | 60 | 25 | 25 | | | | |
| India, Ceylon | | | 50 | 25 | 15 | | | | |
| Caroline, Mariana and Marshall Islands ¼ oz. Note 4 | | | | 15 | 15 | | | | |
| Europe ½ oz. Note 8 | 30 | 30 | 30 | | | | | | |
| Europe ¼ oz. | | | | 15 | 15 | | | | |
| A Countries Note 5 | | | | | | 10 | 10 | | |
| B Countries Note 5 and 6 | | | | | | 15 | 15 | 15 | 15 |
| C Countries Note 5 and 6 | | | | | | 25 | 25 | 25 | 25 |
| Air Letter Sept. 11, 1944 Aerogramme Sept. 1947 Note 9 | 10 | 10 | | 10/15 | 10/15 | 10 | 10 | 10 | 10 |
| Airgraph Note 10 | 5/5 | | | | | | | | |

Notes for Table 12

1. South American Country Groups
 - a. Ecuador, Venezuela, Dutch Guiana
 - b. Columbia
 - c. French Guiana

- d. Argentina, Bolivia, Brazil, Chile, Paraguay, Uruguay
- e. Peru
2. All of South America except British Guiana
3. Australasia included: Australia, New Zealand, Papua, and New Guinea, the South Pacific Islands.
4. From August 1952 to June 30, 1953.
5. "A" countries: Bermuda, West Indies, Mexico, Cuba, Central America, British Guiana, and South America. "B" countries: Europe and Africa. "C" countries: Asia and Australasia.
6. As of June 1, 1967 "B" countries included Europe, Africa, Bermuda, West Indies, Mexico, Cuba, Central America, British Guiana, and South America. "C" countries: Asia and Australasia.
7. Resume air mail to Australasia & Hong Kong Sept 1945-March 1946 75¢ per ½ oz. via USA, or 50¢ per ½ oz. via England.
8. Includes transatlantic air mail. Includes UK, Ireland and Northern Ireland.
Additional European Rates (11):
 - a. Sweden June 1942-May 1945 40¢ ½ oz.
 - b. USSR June 1945-May 1946 40¢ ½ oz.
 - c. Denmark Aug 1945-May 1946 40¢ ½ oz.
 - d. Iceland Nov. 1945-May 1946 34¢ ½ oz.
 - e. Italy, Vatican, Albania Jan 1946-May 1946 35¢ ½ oz.
 - f. Hungary, Czechoslovakia Jan 1946-May 1946 60¢ ½
9. Air Letters preprinted forms without postage to be used to armed forces and civilians beginning September 11, 1944. Air Letter. February 1946 10¢ to United Kingdom and armed forces, 15¢ elsewhere. Sept. 1947 the Aerogramme with postage printed introduced. After July 1, 1953 rate was 10¢ to all countries
10. Airgraph letter form was photographed by Kodak at source and printed at destination saving cargo space. Originally intended for servicemen only to Great Britain, quickly expanded to almost all locations where Canadians were stationed, civilian or service. Airgraph was originally free for all servicemen and Canadian civilians paid the fees. Ended August 1945.
 - a. 15 Nov 1941 10¢ to servicemen only
 - b. 15 June 1942 15¢ to civilians, 6¢ to servicemen
 - c. May 1944 5¢ to/from servicemen, 5¢ to/from civilians

Table 13
Uniform International Letter Rates. All first class letter mail and
Postcards carried by air to all world destinations. (1, 11) Rates: \$.

| Date/Weight | To 1 oz. | To 2 oz. | To 4 oz. | To 8 oz. | To 1 lb. | Aerogramme |
|---------------------|----------|----------|----------|----------|----------|------------|
| July 1, 1971 Note 2 | 0.15 | 0.30 | 0.40 | 0.90 | --- | 0.15 |
| Jan 1, 1976 Note 3 | 0.20 | 0.35 | 0.50 | 0.90 | 1.80 | 0.20 |
| Jan 1, 1977 | 0.25 | 0.45 | 0.60 | 1.20 | 2.35 | 0.25 |
| April 1, 1978 | 0.30 | 0.54 | 0.72 | 1.44 | 2.76 | 0.30 |
| April 1, 1979 | 0.35 | 0.63 | 0.84 | 1.60 | 3.08 | 0.35 |

Notes for Table 13

1. Postcard rate = Letter rate.
2. Universal Letter air mail service up to 8 oz.
3. Universal Letter air mail service up to 1. lb.

Table 14
Uniform International Letter Air Mail Rates (except US). All first class letter mail carried by air to all world destinations. Metric weights.(1) Rates: \$.

| Date/Weight | 1st Wt | 2nd Wt |
|---------------------|--------------------------|--------------------------|
| | 0-20g | 20-50g |
| Jul. 1, 1979 | 0.35 | 0.63 |
| Jan 1, 1982 | 0.60 | 0.93 |
| Jan 15, 1983 | 0.64 | 0.99 |
| Jun 24, 1985 Note 2 | 0.68 | 1.05 |
| April 1, 1987 | 0.72 | 1.12 |
| Jan 1, 1988 | 0.74 | 1.15 |
| Jan 1, 1989 | 0.76 | 1.14 |
| Jan 1, 1990 | 0.78 | 1.17 |
| Jan 1, 1991 | 0.80 | 1.20 |
| Jan 1, 1992 | 0.84 | 1.26 |
| Jan 1, 1993 | 0.86 | 1.29 |
| Mar 1, 1994 | 0.88 | 1.33 |
| Oct 1, 1994 | 0.90 | 1.37 |
| Jan 1, 1999 | 0.95 | 1.45 |
| Jan 1, 2001 | 1.05 | 1.60 |
| | 0-30g | 30-50g |
| Jan 14, 2002 | 1.25 | 1.75 |
| Jan 12, 2004 | 1.40 | 1.95 |
| Jan 17, 2005 | 1.45 | 2.00 |
| Jan 16, 2006 | 1.49 | 2.10 |
| Jan 15, 2007 | 1.55 | 2.10 |
| Jan 14, 2008 | 1.60 | 2.30 |
| Jan 12, 2009 | 1.65 | 2.36 |
| Jan 11, 2010 | 1.70 | 2.44 |
| Jan 17, 2011 | 1.75 | 2.50 |
| Jan 15, 2012 | 1.80 | 2.58 |
| Jan 14, 2013 | 1.85 | 2.68 |
| Mar 31 2014 note 5 | 1.85 | 2.68 |
| Jan 1, 2015 | 1.85 | 2.68 |
| Jan 16, 2017 | 2.50 | 3.60 |
| Jan 2018 | 2.50 | 3.60 |
| Jan 2019 | 2.65 | 3.80 |
| Jan 2019 | 2.71 | 2,88 |

Notes for Table 14

1. Postcard rate = Letter rate.
2. Universal International air mail service up to 2 kg.
3. Aerogrammes were discontinued on December 31, 1998 (11, 15).
4. Recent fees taken from Canada Post *Postal Prices* brochures or www.CanadaPost.ca. See also https://adminware.ca/checklist/chk_rate.htm

Postal Slide Guide

Pitney-Bowes
precision MAILING SCALES

Cut postage costs
save mailing time with



Pitney-Bowes of Canada, Limited
POSTAGE METERS • MAILING MACHINES
BUSINESS MACHINES • POST OFFICE EQUIPMENT

COPYRIGHT 1961

Letter Rates

REGISTRATION
(In Canada only)
All classes of mail (except Parcel Post) posted in Canada for delivery in Canada may be registered at the following rates:

| | |
|--|------|
| For indemnity not exceeding \$25.00 | .20c |
| For indemnity exceeding \$25.00 and not exceeding \$50.00 | .35c |
| For indemnity exceeding \$50.00 and not exceeding \$100.00 | .40c |

Consult Postmaster for rates to other countries.

POST CARDS
Rate..... .04c

SPECIAL DELIVERY
Special Delivery service can be given on letters mailed to nearly all cities in Canada, United States and United Kingdom (obtain list from Postmaster).
Extra Fee..... .10c

★ **CANADA** (over 8 oz.)
ordinary domestic FIRST CLASS rate applies up to and including eight ounces.

PARCEL POST ON BACK

WEIGHT (ounces)

4 14 15 16

10 LOCAL 30 32 34

14 FIRST CLASS 44 47 50

Canada—Canton—Holland
Brazil—Spain—North and South America

18 FOREIGN 58 62 65

Other Countries

22 AIR MAIL 67 72 77 82

★ Canada (over 8 oz.)
United States and Possessions

80 AIR MAIL (10c per 1/2 oz.) 2 2.40 2.60 2.80 3.00 3.20

Bermuda—West Indies
Central and South America—Mexico

120 AIR MAIL (15c per 1/2 oz.) 4 20 4.50 4.80

Great Britain—Europe

200 AIR MAIL (25c per 1/2 oz.) 7 00 7.50 8.00

Africa—Asia and Oceania

03 PRINTED MATTER 08 09 09

Canada—All other Countries

14 15 16

30 32 34

44 47 50

58 62 65

67 72 77 82

2 2.40 2.60 2.80 3.00 3.20

4 20 4.50 4.80

7 00 7.50 8.00

08 09 09

VIII Registry Fees, Domestic, To the USA and International

Registration/Registered Mail

Registration has offered proof of mailing, a record of the mail item in transit, and a signature of the addressee (or representative) upon delivery. In recent years this has included tracking services. Registration included indemnity (with limits) on the loss, theft, or damage of the mailable matter (15). Registration also included special security in transit. In recent years this appears to have been reduced to being handled with ordinary mail, especially for international travel. The Registration fees were added to the postage for a wide range of mailable items. In 1999 it was redefined to be used for letters, postcards and literature for the blind (and small packet by air to the US) and was indicated with a White Barcode Label.

Canada has also provided special forms of Registration that are not covered here (15):

1. Registered, Green Barcode Label 1990-1995.
2. Security Registered 1989-1998.

Table 15
Domestic Registry Fees (1)
Indemnity maximum is noted as appropriate. Fees ¢.

| Dates/ Indemnity | 1909 | Jul 15, 1920 | Aug 1, 1924 | Apr 2, 1951 | Nov 1, 1963 | Jun 1, 1967 | Oct 1, 1970 | Sept 1, 1976 |
|---------------------|------|-----------------|----------------|----------------|----------------|----------------|----------------|-----------------|
| ≤\$25 | 5 | 10 | 10 | 20 | 35 | | | |
| >\$25≤\$50 | | | 20 | 30 | 45 | | | |
| >\$50≤\$75 | | | 30 | 35 | 50 | | | |
| >\$75≤\$100 | | | 40 | 40 | 60 | | | |
| ≤\$50 | | | | | | 50 | 50 | |
| >\$50≤\$100 | | | | | | 75 | 75 | |
| >\$100≤\$200 | | | | | | | 110 | |
| ≤\$50 | | | | | | | | 75 |
| >\$50≤\$100 | | | | | | | | 105 |
| Ea. Adl \$100 | | | | | | | | +25 Note 1 |

Note 1. Maximum indemnity \$1000.

Table 15 Continued
Domestic Registry Fees 1977-1988(1)
Indemnity maximum is noted as appropriate. Fees \$.

| Dates/ Indemnity | Apr 1, 1977 | Apr 1, 1978 | Apr 1, 1979 | Jan 1, 1982 | Jan 15, 1983 | Jun 24 1985 | Apr 1, 1987 | Jan 1 1988 |
|----------------------------|----------------|----------------|----------------|----------------|-----------------|----------------|----------------|---------------|
| ≤\$100 | 1.00 | 1.25 | 1.50 | 1.85 | 1.96 | 2.46 | 2.63 | 2.70 |
| Ea. Adl \$100 Note 1 | +0.25 | +0.25 | +0.25 | +0.30 | +0.32 | + 0.34 | +0.36 | +0.37 |

Note 1. Maximum indemnity \$1000.

Table 15 Continued
Domestic Registry Fees 1990-1999(1)
Indemnity maximum is noted as appropriate. Fees \$.

| Dates/ Indemnity | Jan 1, 1990 | Jan 1, 1992 | Jan 1, 1993 | Mar 1, 1994 | Oct 1, 1994 | Aug 1, 1995 | Oct 1, 1997 | Jan 1, 1999 |
|-----------------------------|------------------------|------------------------|------------------------|------------------------|------------------------|------------------------|------------------------|------------------------|
| No Indemnity | 2.70 | 2.85 | 2.95 | 3.05 | ? | 315 | 315 | |
| ≤\$250 | 4.40 | 4.90 | 5.15 | 5.30 | 5.45 | 5.60 | ? | |
| ≤\$100 | | | | | | | | 4.00 |
| Ea. Adl \$100 Note 1 | +0.37 | +0.40 | +0.43 | +0.45 | +0.45 | +0.45 | +0.45 | +0.50 Note 2 |

Note 1. Maximum indemnity \$5000.

Note 2. Maximum indemnity \$1000.

Table 15 Continued
Domestic Registry Fees 1999-2020(1,6,15)
Indemnity maximum is noted as appropriate. Fees \$.

| Indemnity/ Dates | ≤\$100 | Ea. Adl \$100 Note 1 |
|-----------------------------|---------------|---------------------------------|
| Oct, 1999 | 4.00 | +0.50 |
| Jan 2001 | 4.00 | +0.55 |
| Oct 2002 | 4.50 | +0.55 |
| Jan 2004 | 6.00 | +0.65 |
| Jan 2005 | 6.25 | +0.75 |
| Jan 2006 | 6.50 | +0.75 |
| Jan 2007 | 6.95 | +0.80 |
| Jan 2008 | 7.25 | +0.95 |
| Jan 2009 | 7.50 | +1.05 |
| Jan 2010 | 7.95 | +1.15 |
| Jan 2011 | 8.10 | +1.30 |
| Jan 2012 | 8.25 | +1.80 |
| Jan 2012 | 8.50 | +1.95 |
| Jan 2014 | 8.50 | +2.05 |
| Jab 2018 | 9.00 | +2.25 |
| Jan 2019 | 9.50 | +2.25 |
| Jan 2020 | 9.75 | +2.25 |

Note 1. Maximum indemnity \$5000.

Recent fees taken from Canada Post *Postal Prices* brochures.

Table 16
Registry Fees to United States 1888-1976 (1). Fees ¢.

| Dates/ Indemnity | May 1, 1888 | Jul 15, 1920 | Apr 2, 1951 | Jul 1, 1951 | Nov 1, 1963 | Jun 1, 1967 | Oct 1, 1970 | Sept 1 1976 |
|---------------------|----------------|-----------------|----------------|----------------|----------------|----------------|----------------|----------------|
| ≤ 50 francs | 2 | 10 | | | | | | |
| ≤ 25 francs | | | 20 | | | | | |
| ≤\$25 | | | | 20 | 35 | | | |
| >\$25≤\$50 | | | | 30 | 45 | | | |
| >\$50≤\$75 | | | | 35 | 50 | | | |
| >\$75≤\$100 | | | | 40 | 60 | | | |
| ≤\$50 | | | | | | 50 | 50 | 75 |
| >\$50≤\$100 | | | | | | 75 | 75 | 105 |
| >\$100≤\$200 | | | | | | | 110 | 130 |

Table 16 Continued
Registry Fees to United States 1977-2011 (1, 6, 15). Fees \$.

| Indemnity/ Dates | ≤\$100 | >\$100≤\$200 | Ea. Adl \$100 Note 1 | ≤\$60 |
|---------------------|--------|--------------|-------------------------|-----------------|
| Apr 1, 1977 | 1.00 | 1.25 | | |
| Apr 1, 1978 | 1.25 | 1.50 | | |
| Apr 1 1979 | 1.50 | 1.75 | | |
| Jan 1, 1982 | 2.00 | 2.50 | | |
| Jan 15, 1983 | 2.12 | 2.65 | | |
| Jan 24, 1985 | 2.46 | 2.80 | | |
| Apr1, 1987 | 2.63 | | +0.36 | |
| Jan 1, 1988 | 2.70 | | +0.37 | |
| Jan 1, 1990 | 3.00 | | +0.37 | |
| Jan 1, 1991 | 3.10 | | +0.37 | |
| Jan 1, 1992 | 4.90 | | +0.40 | |
| Jan 1, 1993 | 5.15 | | +0.43 | |
| Mar 1, 1994 | 2.30 | | +0.45 | |
| Oct 1, 1994 | 5.45 | | +0.45 | |
| Aug 1, 1995 | 5.60 | | +1.00 | |
| Oct 1, 1997 | 6.90 | | +1.00 | |
| Jan 1, 1999 | 8.20 | | +1.00 | |
| Oct 4, 1999 | 9.00 | | +1.00 | |
| Jan 2004 | 11.00 | | Note 2 | |
| Jan 2006 | | | | 11.00 Note 3 |
| Jan 2007 | | | | 11.95 |
| Jan 2008 | | | | 12.95 |
| Jan 2011 | | | | 13.95 |

Note 1. Maximum indemnity \$1000.

Note 2. Maximum indemnity \$100.

Note 3. Maximum indemnity \$60 after Jan 2006.

Recent fees from Canada Post *Postal Prices* brochures.

Table 16 Continued
Registry Fees International Except USA 1879-1977 (1). Fees ¢.

| Dates/ Location/ Indemnity | May 1, 1879 | Jul. 15, 1920 | Apr. 2, 1951 | Nov. 1, 1963 | Jun. 1, 1967 | Jul. 1, 1970 | Jan. 1, 1976 | Apr. 1, 1977 | Apr. 1, 1978 | Apr. 1, 1979 |
|---|------------------------|--------------------------|-------------------------|-------------------------|-------------------------|-------------------------|-------------------------|-------------------------|-------------------------|-------------------------|
| All Countries ≤ 50 francs Note 1 | 5 | 10 | | | | | | | | |
| All Countries ≤ 25 francs Note 1 | | | 20 | 35 | 50 | | | | | |
| All Countries ≤ 40 francs Note 1 | | | | | | 50 | 75 | 100 | 125 | 150 |

Note 1. UPU International standard of gold francs for inter-post office transactions.

Table 16 Continued
Registry Fees International Except USA 1982-2011 (1, 6, 15). Fees \$.

| Location/ Indemnity/ Dates | All Countries ≤ \$30 | All Countries ≤ \$40 | All Countries ≤ \$45 | All Countries ≤ \$60 |
|---|---------------------------------|---------------------------------|---------------------------------|---------------------------------|
| Jan 1, 1982 | 2.00 | | | |
| Jan 15, 1983 | 2.12 | | | |
| Jan 24, 1985 | 2.46 | | | |
| Apr 1, 1987 | 2.63 | | | |
| Jan 1, 1988 | 2.70 | | | |
| Jan 1, 1990 | 3.00 | | | |
| Jan 1, 1991 | | 3.10 | | |
| Jan 1, 1992 | | 4.90 | | |
| Jan 1, 1993 | | 5.15 | | |
| Mar 1, 1994 | | 5.30 | | |
| Oct 1, 1994 | | | 5.45 | |
| Aug 1, 1995 | | | 5.60 | |
| Oct 1, 1997 | | | | 6.90 |
| Jan 1, 1999 | | | | 8.20 |
| Oct 4, 1999 | | | | 9.00 |
| Jan 2004 | | | | 11.00 Note 1 |
| Jan 2005 | | | | 11.00 |
| Jan 2007 | | | | 11.95 |
| Jan 2008 | | | | 12.50 |
| Jan 2011 | | | | 13.95 |

Note 1. Indemnity \$100 from Jan 2004-Jan 2005.

Note 2. Recent fees taken from Canada Post *Postal Prices* brochures.

IX Special Delivery and Xpresspost Services

- **Special Delivery** domestic (1898 to 1993) featured delivery on the day or following business the day of receipt by the most expeditious service. Became two tiered in 1998, Local for delivery at the same post office, and Forward for all non-local. Replaced by **Xpresspost** in 1993.
- **Special Lettermail** (1989 to 1990) was a short lived service for next business day delivery local or two to three business days between major Canada urban centers. Replaced by Special Delivery in 1990.
- **Special Delivery to USA** (1898 to 2000) and **Special Lettermail** (1989 to 1990) had expedited processing within Canada and expedited delivery in the USA. Replaced by **Xpresspost-USA** in 2000.
- **Xpresspost** (1993-Present) offers on-time delivery guarantee for lettermail and parcel items of next day for local and two to three business days between Canadian urban centers. Tracking available via automated telephone service or, more recently, the internet (15).
- **Xpresspost-USA** (2000 to present) offers speedy and guaranteed delivery of documents and parcels. Tracking available via automated telephone service or, more recently, the internet.
Note that Xpresspost services are out of the scope of this discussion (15).

Table 17
Special Delivery 1898-2000. (1, 15) Domestic and to the USA
Special Lettermail 1989-1990. (1, 15) Fees \$.

| Date/ Service | Domestic | To USA | Domestic Local | Domestic Forward | Special Lettermail Domestic Local | Special Lettermail Domestic Forward or to US |
|--------------------------|-----------------|---------------|---------------------------|-----------------------------|--|---|
| July 1, 1898 | 0.10 | 0.10 | | | | |
| Aug 1, 1921 | 0.20 | 0.20 | | | | |
| Mar 1, 1939 | 0.10 | 0.10 | | | | |
| Nov 1, 1963 | 0.25 | 0.25 | | | | |
| Jun 1, 1967 | 0.40 | 0.40 | | | | |
| Sept 1, 1976 | 0.80 | 0.80 | | | | |
| Apr 1, 1979 | 1.00 | 1.00 | | | | |
| Jan 15, 1983 | 1.06 | 1.06 | | | | |
| Jun 6, 1985 | 1.96 | 1.96 | | | | |
| Jan 1, 1988 | End | 2.63 | 1.83 | 2.63 | | |
| Apr 7, 1989 | | 2.63 | 1.85 | 2.63 | 1.82 | 2.62 |
| Jan 1, 1990 | | 2.63 | 1.85 | 2.63 | 2.62 | 2.61 |
| Jan 1, 1991 | | 2.65 | 1.85 | 2.65 | | |
| Sept 1 1992 | | 2.80 | 1.85 | 2.65 | | |
| Sept 1, 1993 | | 2.80 | End | End | | |
| Mar 1, 1994 | | 2.90 | | | | |
| Jan 1, 1995 | | 3.90 | | | | |
| Aug 1, 1995 | | 4.50 | | | | |
| Oct 15, 1996 | | 4.60 | | | | |
| Jul 1, 2000 | | End | | | | |

Note: Domestic Special Delivery replaced by Xpresspost in 1993. Special Delivery to USA replaced by Xpresspost-USA in 2000.

Special Delivery International (other than USA)

Special Delivery became available internationally as shown in Table 17. Special Delivery international has been available for letters and postcards (air or surface), literature for the Blind, printed papers (air effective April 1986) and small packets (air effective April 1986).

From April 1986 air letters, postcards, printed paper, and literature for the blind to countries that did not offer special delivery may use “Special Handling” in which the item is handled within Canada in the Special Delivery system and dispatched by air to the destination country.

From January 2002, Special Delivery is replaced by Xpresspost-International, which is out of the range of this discussion (15).

Special Lettermail International was a service offered starting July 1989 to about Jan 1990 and was replaced by Special Delivery International(15).

Table 18
Special Delivery International
Countries where Special Delivery is offered (15).

| Offered Since: | Countries |
|-----------------------|---|
| 1952 | Great Britain and Northern Ireland |
| April 1964 | Australia, Germany (Federal Republic) Netherlands and Switzerland |
| 1967 | France |
| 1968 | Sweden |
| 1969 | Venezuela (Caracas only) |
| 1974 | Belgium and Hong Kong |
| 1975 | Israel |
| January 1980 | Singapore |
| April 1982 | South Africa and Namibia |
| July 1982 | Japan |
| August 1982 | Ireland (Republic) |
| October 1982 | Greece |
| April 1983 | Finland |
| October 1983 | Kuwait |
| May 1984 | Norway |
| April 1985 | Denmark and Italy |

By the late 1980s, more than 130 countries offered Special Delivery and by 2001 more than 160 nations offered this service.

Table 19
Special Delivery Fees International
(Other than USA) (6, 15). Fees \$.

| Date | Fee |
|------------|------------|
| 1952 | 0.10 |
| Oct. 1963 | 0.25 |
| Jun. 1967 | 0.40 |
| Jan. 1976 | 0.60 |
| Apr. 1978 | 0.80 |
| Apr. 1979 | 1.00 |
| Jan. 1983 | 1.06 |
| Jun. 1985 | 1.96 |
| Jan. 1988 | 2.63 |
| Jan. 1991 | 2.65 |
| Sept. 1992 | 2.80 |
| Mar. 1994 | 2.90 |
| Jan. 1995 | 3.90 |
| Oct. 1996 | 4.60 |
| Jan. 2001 | 4.75 |
| Jan. 2002 | Xpresspost |

References

1. Smith, R.C. and Wawrukiewicz, A.S., *Canada Domestic and International Postal Rates and Fees 1870-1999*, The Press for Philately, 2000.
2. Arfken, G.B. and Plomish, W.R., *Air Mails of Canada 1925-1939*, Charles G. Publications 2000.
3. Whiteley, David H., *Official Air Mail Rates to Foreign and Overseas Destinations as Established by the Canadian Post Office 1925-December 1942*, DHW Publications, Winnipeg 2000.
4. Whiteley, David, "Air mail Routes and Rates from Canada during the War Years 1939-1946, Part I" *PHSC Journal* 127(September) 14 (2006); and "Part II," *PHSC Journal*, 128 (December) 33 (2006).
5. Proud, Edward, *Intercontinental Air mails Volume One Transatlantic and Pacific*, Proud Publications, East Sussex 2008.
6. *Elizabethan Era Definitives, Canadian Postage Rates 1943-2001*, www.adminware.ca/checklist/chk_rate.htm. This site also holds the *Postal Prices* bulletins from 1999 forward.
7. Whitehouse, W., "Canadian Armed Forces Air Letters," *BNA Topics* 35(1, #363) 36 (1978).
8. Zaluski, Edward, *Canadian Revenues, Volume Three*, Right Road Printing, Nepean (1990).
9. Whiteley, David, "Air Mail between Canada & United States 1926-1928," *PHSC Journal*, 130(June), 20 (2007).
10. Whiteley, David, "Air Mail Covers between Canada and the United States 1926-1928," *PHSC Journal*, 140(winter) 20 (2010).
11. Smith, Robert C., *Selected Canadian Postage Rates*, Privately Printed, Ottawa (2005).
12. Whiteley, David, "War Time Air mail Rates from North America to Africa: 1940-1941," *PHSC Journal*, 134 (June) 26 (2008).
13. Johnson, J.L., Jr., "Canadian FAM 14 Air Mail Rates 1939-1941," *Airpost Journal*, 66(8) 305 (1995).
14. Schnell, Roger G., "Trans-Pacific Air mail to and from Africa Part 1," *Airpost Journal*, 74(5) 183 (2003); and "Part 2," *Airpost Journal*, 74(6) 241 (2003).
15. Chung, FRPSC, Andrew, Machum, Harry W.E., and Narbonne, OTB FRPSC, Roger F., *Postal Rates and Fees of the Elizabethan Era in Canada 1952-2002 Volume One*, and *Postal Rates and fees of the Elizabethan Era in Canada 1952-2005 Volume Two*, (Two Volumes), Elizabethan Study Group, 2004, 2005.
16. Toop, E.R., "The Canadian Airgraph Service, Part I," *BNA Topics* 44(3) 18 (1987).
17. Daynes, John, *Overseas Mail Branch Weekly Reports, Censorship & Mail Services, 1939-1945*, Self Published (2005).
18. Daynes, John, *Wartime Air Mail, An Introduction*, Postal History (2000).
19. Wilson, John, "The LATI Substitute service of Pan American Airways: The Third Atlantic Route," *Airpost Journal*, 81(10) 408 (2010).
20. Crotty, David, *Pan American Airways 1939-1944, Atlantic Wartime Operations Catalog*, CreateSpace, 2014.
21. Boyle Jr., Thomas H., *Air mail Operations During World War II*, AAMS, Mineola, (1998).
22. Hargreaves, Chris, "Canadian Air mail Notes, Overseas Air Mail Rates 1931," *Airpost Journal*, 84(12), 508 (2013).
23. Hargreaves, Chris, "New research on Canada's air mail rates in 1928", *BNA Topics* 76(2 #559) (2019).

Notes:

1. Some issues of the *Monthly Supplement to Postal Guide* for Canada are now available at the website: www.collectionscanada.gc.ca/.
2. Current and recent rates can be obtained in the *Postal Prices* bulletin available at Canada Post offices, at www.CanadaPost.ca and at the website: www.adminware.ca/checklist/chk_rate.htm.